

Product Offering

SAMPUTENSILI MACHINE PRODUCTS

Hobbing Machines

	Dia. (mm)	Module	Face Length (mm)
S80	80	3.5	200/350
S140	140	3.5	200/350
S200	200	3.5	200/350
S250/T	250	8.0	400/600
S300	300	6.0	400/600
S400	400	6.0	400/600
S600	600	22.0	450/800
S800	800	22.0	1060
S900	900	28.0	1000/1400
S1500	1500	28.0	1000/1400
S2300	2300	28.0	1000/1400

Chamfering Deburring Machines

	Dia. (mm)	Module	Face Length (mm)
S250 CD	250	150	400
S250 CDA	250	150	400
S250 CDX	250	50/400	400/700

Grinding Machines

Generating/Profile Grinding:

	Dia. (mm)	Module	Face Length (mm)
S250 G	250	4.0	400
S400 G	380	8.0	400
S400 GT	400	6.0	1000
S380 G/GX	400	15.0	900/1290
S380 GP/GPX	400	41	900/1290
S680 GW	400	52	900
S1000 GW	400	52	1290
S3000 GW	400	52	3600

Shaving Cutter Sharpening

	Dia. (mm)	Module	Face Length (mm)
S400 GS	400	15.0	70

Rotor Manufacturing:

	Dia. (mm)	Module	Face Length
S300 R	200	20	400/600
S600 R	600	40	800
S380 GR/GRX	400	52	900/1290
S380 GP/GPX	400	41	900/1290
S400 GR/GRX	400	65	1000/1500

STAR-ELK RAPIDS MACHINE PRODUCTS

Universal Tool Grinding Machines

for gear, tools, broaches, slab mills, rack cutters, step tools

Dia. (mm)	L (mm)	Travel	
UTG600	3-254	3360	880
UTG1200	3-254	4370	1480
UTG1800	3-254	4980	2080
UTG2000	3-254	5590	2680

STAR-ELK RAPIDS MACHINE PRODUCTS

Special Tool Grinding Machines

for mills, drills, step tools, carbide tools

	Dia. (mm)	L (mm)	Travel
CTG3	100	530	280
PTG1	100	530	±100
PTG4	100	530	±100
PTG6	170	520	300

CTG: Cutting tool grinding machine

PTG: Precision tool grinding for tools and orthopedics

All equipped with NUMROTO PLUS grinding software

BOURN & KOCH MACHINE PRODUCTS

Horizontal Gear Hobbing Machines

	Dia. (mm)	Module	Face Length
25H	25		100
100H	125	2.5	508/810
200H	200	6.4	1320/1820
400H	400	6.4	1320/1820
400HXL	406	6.4	3048
600H	600	6.4	2450/3760
600HXL	600	10	3963/4572/7112

Fellows Gear Shapers

Mechanical Stroking:

	Dia. (mm)	Module	Face Length
10-4	250	6	100
20-4	500	6	100
MS300-125	300	6.35	125
MS450-125	450	8.47	125
MS650-125	650	12.7	125
4-3SS	51	8.5	76

Hydrostroke™ Stroking:

	Dia. (mm)	Module	Face Length
HS650-200	200	12.7	300
HS650-300	300	12.7	300
HS1280-300	300	12.7	300
HS1280-450	450	12.7	450
HS2550-300	300	12.7	300

Bourn & Koch Vertical Gear Grinders

	Dia. (mm)	Face Length
500VG CNC	500	300
900VG CNC	900	300
1000VG CNC	1000	300
1400VG CNC	1400	300

Hob & Shaper Cutter Inspection Systems

- HSC100
- CMU130



BOURN & KOCH MACHINE PRODUCTS

Motch Turning Center (Chuckers)

	Dia. (mm)
119 VNC	500
125 VNC	635
135 VNC	889
142 VNC	1067
152 VNC	1320
219D VNC Twin	500
225D VNC Twin	635
235D VNC Twin	889
242D VNC Twin	1067
SL200 Twin Spindle	200
MVSL200 Self Loading	305
MVSL450 Self Loading	558

Springfield Vertical Grinders

	Dia. (mm)	Depth (mm)
36CNC	117	457
42CNC	1270	457
48CNC	1524	457
62CNC	1727	698

Blanchard Rotary Grinders

	Dia. (mm)	Height (mm)
8AD-12	356	140
11AD-20	533	305
20AD-36	1219	610
22AD-42	1219	610
26HAD-48	1422	610
36HD-66	2133	610
42HAD-84	2438	838
54HD-100	3251	838
72HD-120-144	3657	838
76HD-120-164	4165	1524

- Acme Multi Spindle Machines
- Extrusion Milling Machines
- Rotary Transfer Machining Centers
- Rotary Trunnion Machining Centers
- Specialty Machines
- Remanufacturing, Retrofits, Recontrols

STAR SU TOOLS

Hobs

- HSS or Carbide
- Bore Type or Shank Type
- Single and multi thread designs
- Bridge Hobs™ for HSS Dry Cutting
- For gears, involute splines, wormgears, camshafts, sprockets or special forms
- Chamfer Hobs®

STAR SU TOOLS

Shaper Cutters

- HSS
- Spur or helical
- Hub, shank and deep counterbore type
- Special cutters for sprockets, splines, timing gears

Milling Cutters

- Star Sticks™ milling blades
- Straight and spiral gash cutters
- Shank drive and interlocking cutters
- Intermittent cutting cutters

Rack Cutters

- Standard and helical
- Christmas tree cutters
- HKR
- One tooth cutters
- Sprocket cutters

Saw Cutters

- Hack, band, and circular saw blades in variable pitch
- Straight and interlocked sets
- Standard and precision quality
- Single piece circular
- Intermittent continuous feed
- Special tooth forms, including chip breakers

Shaving Cutters

Chamfer, Deburring and Rolling Tools

Bevel Tool Stick Blades

Gundrills

- Single flute
- Solid carbide
- Double crimp
- Two flute two hole
- Double jet
- Whip Guide Supports

Solid Carbide Drills & Reamers

- Straight or spiral
- "G" drills
- High Performance Points
- Porting tools
- Double jet
- Single or multiple diameters

Brazed Carbide Drills & Reamers

- Straight or spiral flutes (RH or LH)
- Single or multiple diameters
- Blind/thru hole designs

Carbide Preforms

- Drill and reamer blanks
- Rods
- Dies and bushings
- Special extrusion
- Flat blanks
- Inserts





V-TEC PCD HELICAL END MILLS

V-tec is unique technology that utilizes a special ultra high-pressure and high-temperature process that allows polycrystalline diamond (PCD) to be directly sintered into veins that form complex geometric shapes.

While PCD is typically only available in flat segments, V-tec end mills and drills are offered in true solid-body helical geometries free of braze joints that may be prone to failure.



V-TEC DRILLS WITH PCD VEINED CUTTING EDGES

V-tec veined drills with helical flutes are used for drilling highly abrasive composites in the aerospace industry. These drills create the greatest value in terms of quality, efficiency, and productivity.

- Broader application range
- Lower costs
- Improved productivity
- Improved workpiece quality

STANDARD SIZES

.130", .140", .160", .191", .251", .260"



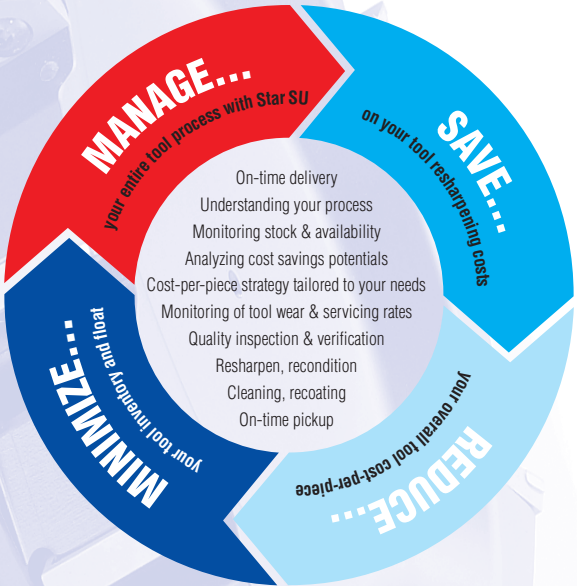
STAR SU TOOLS

Total Tool Life Cycle Management

Innovative cost/piece (CPU or PPU) programs can help you control your perishable tools costs.

Choose your level of involvement. We offer pure reconditioning services for existing single tools to complete service management with the purchase of the initial product.

Star SU offers total tool life cycle management of services and equipment for every step of your manufacturing process, including individualized support services to keep your tools running efficiently.



- Resharpening
- Recoating
- Retipping
- Repair and Reconditioning
- Measurement and Recertification
- Pick Up & Delivery (in defined areas)
- CMS



Star SU LLC
5200 Prairie Stone Parkway, Suite 100
Hoffman Estates, IL 60192
USA
Tel.: 847 649 1450
Fax: 847 649 0112
sales@star-su.com

Star SU LLC
Sales Office Michigan
23461 Industrial Park Drive
Farmington Hills, MI 48335-2855
USA
Tel.: 248 474 8200
Fax: 248 474 9518
sales@star-su.com



Star Cutter Co.
Elk Rapids Engineering
Machine Tool Technology
210 Industrial Park Drive/P.O. Box 728
Elk Rapids, MI 49629-0728
USA
Tel.: 231 264 5661
Fax.: 231 264 5663
sales@starcutter.com



Bourn & Koch Inc.
2500 Kishwaukee Street
Rockford, IL 61104
USA
Tel.: 815 965 4013
Fax: 815 965 0019
sales@bourn-koch.com
www.bourn-koch.com



SU America Inc.
5200 Prairie Stone Parkway, Suite 100
Hoffman Estates, IL 60192
USA
Tel.: 847 649 1450
Fax: 847 649 0112
sales@suamerica.com